

Cytokines

Human Recombinant G-CSF, ACF

Granulocyte colony-stimulating factor,
animal component-free

Catalog #	78138	10 µg
	78138.1	100 µg
	78138.2	1000 µg



Scientists Helping Scientists™ | WWW.STEMCELL.COM

TOLL FREE PHONE 1 800 667 0322 • PHONE +1 604 877 0713

INFO@STEMCELL.COM • TECHSUPPORT@STEMCELL.COM

FOR GLOBAL CONTACT DETAILS VISIT OUR WEBSITE

Product Description

Granulocyte colony-stimulating factor (G-CSF) is a member of the CSF family of glycoproteins that regulate hematopoietic cell proliferation, differentiation, and function. It is a key cytokine involved in the production of neutrophils and the stimulation of granulocyte colony formation from hematopoietic progenitor cells (Metcalf & Nicola). G-CSF causes a range of effects including a transient reduction of SDF-1 expression (Petit et al.), the activation of metalloproteases that cleave VCAM-1 (Levesque et al.), and the release of norepinephrine from the sympathetic nervous system (Katayama et al.), leading to the release or mobilization of hematopoietic stem cells from the bone marrow into the periphery. The G-CSF receptor is expressed on a variety of hematopoietic cells, including myeloid-committed progenitor cells, neutrophils, granulocytes, and monocytes. In addition to hematopoietic cells, G-CSF is also expressed in cardiomyocytes, neuronal cells, mesothelial cells, and endothelial cells. Binding of G-CSF to its receptor leads to activation of the JAK/STAT, MAPK, PI3K, and AKT signal transduction pathways. This product is animal component-free.

Product Information

Alternative Names:	Colony-stimulating factor 3, CSF-3, MGI-1G, Pluripoietin
Accession Number:	P09919
Amino Acid Sequence:	MTPLGPASSL PQSFLKCLE QVRKIQQDGA ALQEKLCATY KLCHPEELVL LGHSLGIPWA PLSSCPSQAL QLAGCLSQLH SGLFLYQGLL QALEGISPEL GPTLDTLQLD VADFATTIWQ QMEELGMAPA LQPTQGAMPA FASAFQRRAG GVLVASHLQS FLEVSRYVLR HLAQP
Predicted Molecular Mass:	18.8 kDa
Species:	Human
Cross Reactivity:	Mouse
Formulation:	Lyophilized from a sterile-filtered aqueous solution containing acetic acid and sodium chloride.
Source:	E. coli

Specifications

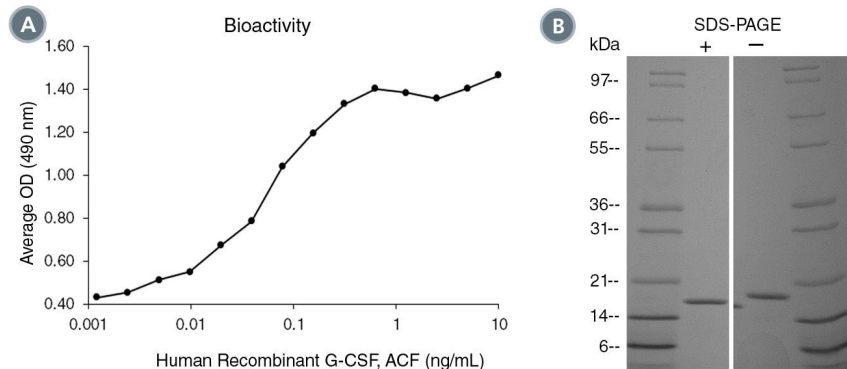
Activity:	The EC50 is ≤ 0.06 ng/mL as determined by a cell proliferation assay using NSF-60 cells. The specific activity is approximately 5.4×10^4 IU/µg as calibrated against the human recombinant G-CSF WHO International Standard (NIBSC code: 09/136).
Purity:	$\geq 95\%$
Endotoxin Level:	Measured by kinetic Limulus amoebocyte lysate (LAL) analysis and is ≤ 1 EU/µg protein.

Preparation and Storage

Storage:	Store at -20°C to -80°C.
Stability:	Stable as supplied for 12 months from date of receipt.
Preparation:	Centrifuge vial before opening. Bring vial and sterile water to room temperature (15 - 25°C). Reconstitute the product in sterile water to at least 0.1 mg/mL by pipetting the solution down the sides of the vial. Do not vortex.

OPTIONAL: After reconstitution, if product will not be used immediately, dilute with concentrated bovine serum albumin (BSA) to a final BSA concentration of 0.1%. The effect of storage of stock solution on product performance should be tested for each application. As a general guide, do not store at 2 - 8°C for more than 1 month or at -80°C for more than 3 months. Avoid repeated freeze-thaw cycles.

Data



(A) The biological activity of Human Recombinant G-CSF, ACF was tested by its ability to promote the proliferation of mouse NFS-60 cells. Cell proliferation was measured using a fluorometric assay method. The EC₅₀ is defined as the effective concentration of the growth factor at which cell proliferation is at 50% of maximum. The EC₅₀ in the above example is 0.053 ng/mL.

(B) 1 µg of Human Recombinant G-CSF, ACF was resolved with SDS-PAGE under reducing (+) and non-reducing (-) conditions and visualized by Coomassie Blue staining. Human Recombinant G-CSF, ACF has a predicted molecular mass of 18.8 kDa.

Related Products

For a complete list of cytokines, as well as related products available from STEMCELL Technologies, visit www.stemcell.com/cytokines or contact us at techsupport@stemcell.com.

References

- Katayama Y et al. (2006) Signals from the sympathetic nervous system regulate hematopoietic stem cell egress from bone marrow. *Cell* 124(2): 407–21.
- Lévesque JP et al. (2001) Vascular cell adhesion molecule-1 (CD106) is cleaved by neutrophil proteases in the bone marrow following hematopoietic progenitor cell mobilization by granulocyte colony-stimulating factor. *Blood* 98(5): 1289–97.
- Metcalf D & Nicola NA. (1983) Proliferative effects of purified granulocyte colony-stimulating factor (G-CSF) on normal mouse hemopoietic cells. *J Cell Physiol* 116(2): 198–206.
- Petit I et al. (2002) G-CSF induces stem cell mobilization by decreasing bone marrow SDF-1 and up-regulating CXCR4. *Nat Immunol* 3(7): 687–94.

STEMCELL TECHNOLOGIES INC.'S QUALITY MANAGEMENT SYSTEM IS CERTIFIED TO ISO 13485. PRODUCTS ARE FOR RESEARCH USE ONLY AND NOT INTENDED FOR HUMAN OR ANIMAL DIAGNOSTIC OR THERAPEUTIC USES UNLESS OTHERWISE STATED.

Copyright © 2020 by STEMCELL Technologies Inc. All rights reserved including graphics and images. STEMCELL Technologies & Design, STEMCELL Shield Design, and Scientists Helping Scientists are trademarks of STEMCELL Technologies Canada Inc. All other trademarks are the property of their respective holders. While STEMCELL has made all reasonable efforts to ensure that the information provided by STEMCELL and its suppliers is correct, it makes no warranties or representations as to the accuracy or completeness of such information.