

# Cytokines

## Human Recombinant Fractalkine (CX3CL1)

Fractalkine

Catalog #	78051	5 µg
	78051.1	25 µg
	78051.2	1000 µg



Scientists Helping Scientists™ | [WWW.STEMCELL.COM](http://WWW.STEMCELL.COM)

TOLL FREE PHONE 1 800 667 0322 • PHONE +1 604 877 0713

[INFO@STEMCELL.COM](mailto:INFO@STEMCELL.COM) • [TECHSUPPORT@STEMCELL.COM](mailto:TECHSUPPORT@STEMCELL.COM)

FOR GLOBAL CONTACT DETAILS VISIT OUR WEBSITE

## Product Description

Fractalkine (CX3CL1) is a unique chemokine belonging to the CX3C family, and is characterized by a C-X3-C cysteine motif within the chemokine domain, near the amino terminus of the protein (Bazan et al.). The chemokine domain is connected to an extended mucin-like stalk, followed by a transmembrane region, and a C-terminal intracellular domain (Imai et al.; Jones et al.). The protein signals through interaction with a single receptor, CX3CR1, expressed on monocytes, natural killer cells, T cells, microglia, and smooth muscle cells. Fractalkine is upregulated in endothelial cells by inflammatory signals and is synthesized as a membrane-bound molecule that mediates cell migration and adhesion (White & Greaves). Cleavage at the base of the stalk by metalloproteinases generates a soluble chemokine, which functions as a potent chemoattractant of target cells (Apostolakis & Spandidos; Garton et al.). Fractalkine has been implicated in pathology of inflammatory diseases, such as atherosclerosis and other vascular diseases, and has anti-apoptotic functions (White & Greaves).

## Product Information

Alternative Names:	C3Xkine, Chemokine (C-X3-C motif) ligand 1, FKN, Neurotactin, NTN, NTT, SCYD1, Small inducible cytokine subfamily D member 1
Accession Number:	P78423
Amino Acid Sequence:	QHHGVTKCNI TCSKMTSKIP VALLIHYQQN QASCGKRAII LETRQHRLFC ADPKEQWVKD AMQHLDLRQAA ALTRNGGTFE KQIGEVKPRTPAAGGMDDES VVLEPEATGE SSSLEPTPSS QEAQRALGTS PELPTGVTGS SGTRLPPTPK AQDGGPVGTE LFRVPPVSTA ATWQSSAPHQ PGPSSLWAEAK TSEAPSTQDP STQASTASSP APEENAPSEG QRVWGQQQSP RPENSLEREE MGPVPAHTDA FQDWGPGSMA HVSVVPVSSE GTPSREPVAS GSWTPKAEKP IHATMDPQRL GVLITPVPDA QAATR
Predicted Molecular Mass:	50 - 75 kDa
Species:	Human
Cross Reactivity:	Mouse
Formulation:	Lyophilized after dialysis against phosphate-buffered saline.
Source:	CHO

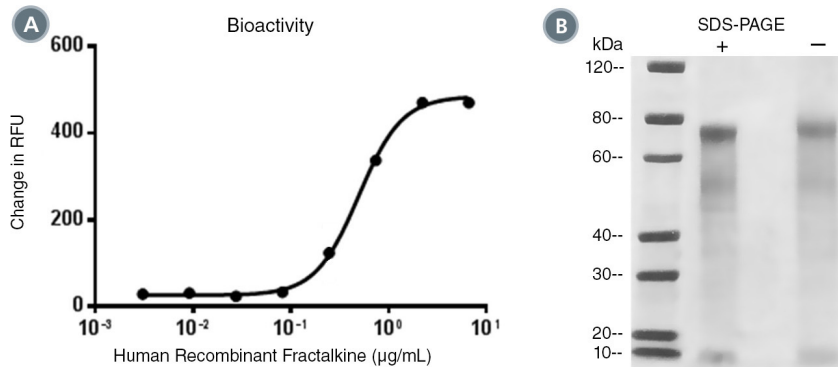
## Specifications

Activity:	The specific activity is $\geq 666$ units/mg ( $EC_{50} \leq 1.5$ µg/mL) as determined by $Ca^{2+}$ mobilization assay in CHO-K1/ $G\alpha_{15}$ /hCX3CR1 cells (human $G\alpha_{15}$ and human CX3CR1 stably expressed in CHO-K1 cells).
Purity:	$\geq 95\%$
Endotoxin Level:	Measured by kinetic Limulus amoebocyte lysate (LAL) analysis and is $\leq 0.2$ EU/µg protein.

## Preparation and Storage

Storage:	Store at $-80^{\circ}C$ .
Stability:	Stable as supplied for 12 months from date of receipt.
Preparation:	Centrifuge vial before opening. Reconstitute the product in sterile water or phosphate-buffered saline to at least 0.1 mg/mL by pipetting the solution down the sides of the vial. Do not vortex. Store at $2 - 8^{\circ}C$ for up to 1 week or at $-20^{\circ}C$ to $-80^{\circ}C$ for up to 3 months. Avoid repeated freeze-thaw cycles.

## Data



(A) The biological activity of Human Recombinant Fractalkine (CX3CL1) was tested by its ability to mobilize  $\text{Ca}^{2+}$  in CHO-K1/ $\text{G}\alpha 15/\text{hCX3CR1}$  cells (human  $\text{G}\alpha 15$  and human CX3CR1 stably expressed in CHO-K1 cells).  $\text{Ca}^{2+}$  mobilization was measured using a fluorometric assay method. The  $\text{EC}_{50}$  is defined as the effective concentration of the growth factor at which  $\text{Ca}^{2+}$  mobilization is at 50% of maximum. The  $\text{EC}_{50}$  in the above example is 0.47 ng/mL.

(B) 2  $\mu\text{g}$  of Human Recombinant Fractalkine (CX3CL1) was resolved with SDS-PAGE under reducing (+) and non-reducing (-) conditions and visualized by Coomassie Blue staining. Human Recombinant Fractalkine (CX3CL1) has a predicted molecular mass of 50 - 75 kDa.

## Related Products

For a complete list of cytokines, as well as related products available from STEMCELL Technologies, visit [www.stemcell.com/cytokines](http://www.stemcell.com/cytokines) or contact us at [techsupport@stemcell.com](mailto:techsupport@stemcell.com).

## References

- Apostolakis S & Spandidos D. (2013) Chemokines and atherosclerosis: focus on the CX3CL1/CX3CR1 pathway. *Acta Pharmacol Sin* 34(10): 1251–6.
- Bazan JF et al. (1997) A new class of membrane-bound chemokine with a CX3C motif. *Nature* 385(6617): 640–4.
- Garton KJ et al. (2001) Tumor necrosis factor- $\alpha$ -converting enzyme (ADAM17) mediates the cleavage and shedding of fractalkine (CX3CL1). *J Biol Chem* 276(41): 37993–8001.
- Imai T et al. (1997) Identification and molecular characterization of fractalkine receptor CX3CR1, which mediates both leukocyte migration and adhesion. *Cell* 91(4): 521–30.
- Jones BA et al. (2010) Fractalkine/CX3CL1: a potential new target for inflammatory diseases. *Mol Interv* 10(5): 263–70.
- White GE & Greaves DR. (2012) Fractalkine: a survivor's guide: chemokines as antiapoptotic mediators. *Arterioscler Thromb Vasc Biol* 32(3): 589–94.

STEMCELL TECHNOLOGIES INC.'S QUALITY MANAGEMENT SYSTEM IS CERTIFIED TO ISO 13485. PRODUCTS ARE FOR RESEARCH USE ONLY AND NOT INTENDED FOR HUMAN OR ANIMAL DIAGNOSTIC OR THERAPEUTIC USES UNLESS OTHERWISE STATED.

Copyright © 2019 by STEMCELL Technologies Inc. All rights reserved including graphics and images. STEMCELL Technologies & Design, STEMCELL Shield Design, and Scientists Helping Scientists are trademarks of STEMCELL Technologies Canada Inc. All other trademarks are the property of their respective holders. While STEMCELL has made all reasonable efforts to ensure that the information provided by STEMCELL and its suppliers is correct, it makes no warranties or representations as to the accuracy or completeness of such information.