

Human Recombinant IGF-II

Insulin-like growth factor 2

Catalog #78023.1	10 µg
Catalog #78023	50 µg
Catalog #78023.2	1000 µg

Product Description

Insulin-like growth factor 2 (IGF-II) is a polypeptide that belongs to the family of insulin-like growth factors that are similar in molecular structure to proinsulin. IGF-II binding to IGF-I receptor activates a signaling cascade via the MAPK and PI3K pathways. IGF-II affects growth, differentiation, and survival of cells in a variety of tissues during embryonic development. It stimulates proliferation and migration of primary lymphatic endothelial cells, and induces lymphangiogenesis (Guvakova).

Product Information

Alternative Names:	Insulin-like growth factor II, Insulin-like growth factor type 2, Somatomedin A, T3M-11-derived growth factor
Accession Number:	P01344
Amino Acid Sequence:	AYRPSETLCG GELVDTLQFV CGDRGFYFSR PASRVSRRSR GIVEECCFRS CDLALLETYC ATPAKSE
Predicted Molecular Mass:	7.5 kDa
Species:	Human
Product Formulation:	Lyophilized from a sterile-filtered aqueous solution containing 0.1% trifluoroacetic acid.
Source:	E. coli
Purity:	≥ 95%

Specifications

Activity:	The specific activity is $\geq 1.7 \times 10^5$ units/mg ($EC_{50} \leq 6$ ng/mL), as determined by a cell proliferation assay using MCF-7 cells.
Endotoxin Level:	Measured by kinetic Limulus amoebocyte lysate (LAL) analysis and is ≤ 0.1 EU/µg protein.

Preparation and Storage

Stability and Storage:

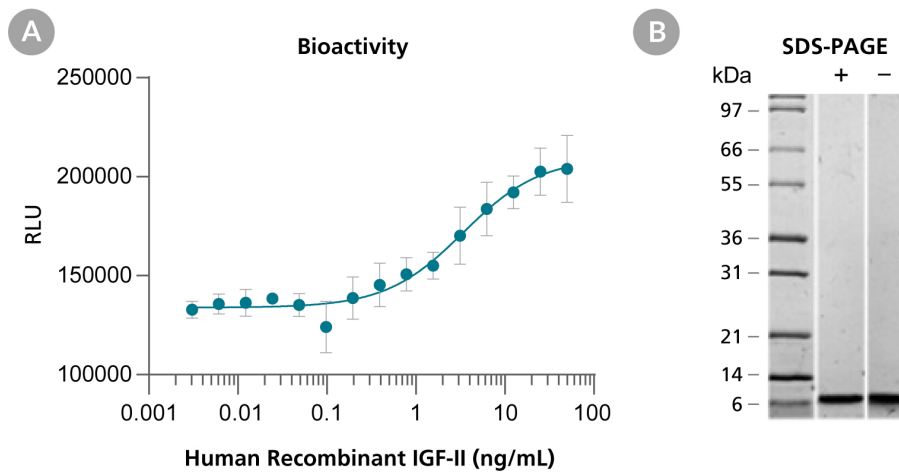
Store at -20 to -80°C. Stable as supplied for 12 months from date of receipt.

Preparation:

Centrifuge vial before opening. Reconstitute the product in sterile water to at least 0.1 mg/mL by pipetting the solution down the sides of the vial. Do not vortex.

OPTIONAL: After reconstitution, if product will not be used immediately, dilute with concentrated bovine serum albumin (BSA) to a final BSA concentration of 0.1%. The effect of storage of stock solution on product performance should be tested for each application. As a general guide, do not store at 2 - 8°C for more than 1 month or at -80°C for more than 3 months. Avoid repeated freeze-thaw cycles.

Data



(A) The biological activity of Human Recombinant IGF-II was tested by its ability to promote the proliferation of MCF-7 cells. The EC50 is defined as the effective concentration of the cytokines at which cell proliferation is at 50% of maximum. The EC50 in the above example is ≤ 6 ng/mL.

(B) 1 μ g of Human Recombinant IGF-II was resolved with SDS-PAGE under reducing (+) and non-reducing (-) conditions and visualized by Coomassie Blue staining. Human Recombinant IGF-II has a predicted molecular mass of 7.5 kDa.

Related Products

For a complete list of cytokines or peptide pools, as well as related products available from STEMCELL Technologies, visit www.stemcell.com/cytokines or contact us at techsupport@stemcell.com.

References

Guvakova MA. (2007) Insulin-like growth factors control cell migration in health and disease. *Int J Biochem Cell Biol* 39(5): 890-909.

PRODUCTS ARE FOR RESEARCH USE ONLY AND NOT INTENDED FOR HUMAN OR ANIMAL DIAGNOSTIC OR THERAPEUTIC USES UNLESS OTHERWISE STATED.

Copyright © 2024 by STEMCELL Technologies Inc. All rights reserved including graphics and images. STEMCELL Technologies & Design, STEMCELL Shield Design, and Scientists Helping Scientists are trademarks of STEMCELL Technologies Canada Inc. All other trademarks are the property of their respective holders. While STEMCELL has made all reasonable efforts to ensure that the information provided by STEMCELL and its suppliers is correct, it makes no warranties or representations as to the accuracy or completeness of such information.