

# Anti-Human CD24 Antibody, Clone 32D12, FITC

Mouse monoclonal IgG1 antibody against human CD24, FITC-conjugated

Catalog #100-1579

100 Tests

20 µL/test

## Product Description

This monoclonal antibody reacts with CD24, a 35 - 50 kDa glycosylphosphatidylinositol (GPI)-linked sialoglycoprotein that is anchored to the plasma membrane and is glycosylated variably depending on cell type. The function of CD24 has yet to be fully determined but it is believed to play a role in lymphocyte development, particularly in acting as a costimulatory molecule for CD4<sup>+</sup> T cells and in regulating B cell proliferation, activation, differentiation, and apoptosis. CD24 may also function in cell adhesion and metastasis, likely through binding of CD62P (P-Selectin). CD24 is expressed by follicular dendritic cells, and various epithelial and hematopoietic cell types, including granulocytes, erythrocytes, most B cells, and subsets of T lymphocytes. As it is expressed throughout B cell development but is lost after differentiation into the plasma cell stage, CD24 may be used as a B cell differentiation marker. Furthermore, CD24 also has the potential to be a marker for tumor prognosis and diagnosis as it is highly expressed in numerous cancers including ovarian, breast, prostate, bladder, renal, and lung, as well as neuroblastomas and various hematological malignancies. Reportedly, the 32D12 antibody recognizes an epitope that is distinct from those recognized by clones VIB-C5, VIB-E3, LC66, BA-1, ML5, OKB2 and SN3 A5-2H10.

Target Antigen:	CD24
Alternative Names:	CD24a, Heat stable antigen, HSA, Ly-52, Nectadrin, Small cell lung carcinoma cluster 4 antigen
Gene ID:	100133941
Species Reactivity:	Human
Host Species:	Mouse
Clonality:	Monoclonal
Clone:	32D12
Isotype:	IgG1, kappa
Immunogen:	Human pre-B lymphoblastic leukemia cell line Reh
Conjugate:	FITC (Fluorescein isothiocyanate)

## Applications

Verified Applications: FC

Reported Applications: FC

Abbreviations: CellSep: Cell separation; ChIP: Chromatin immunoprecipitation; FA: Functional assay; FACS: Fluorescence-activated cell sorting; FC: Flow cytometry; FCXM: Flow cytometric crossmatch assay; FISH: Fluorescence in situ hybridization; ICC: Immunocytochemistry; IF: Immunofluorescence microscopy; IHC: Immunohistochemistry; IHC-F: Immunohistochemistry (frozen-tissue); IHC-P: Immunohistochemistry (paraffin-embedded); IP: Immunoprecipitation; NMR: Nuclear magnetic resonance spectroscopy; RIA: Radioimmunoassay; WB: Western blotting

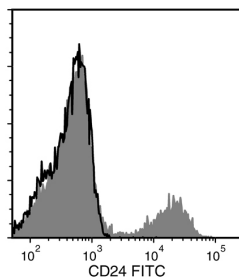
## Properties

**Product Formulation:** Phosphate-buffered saline containing 0.1% bovine serum albumin and less than 0.1% sodium azide

**Stability and Storage:** Product stable at 2 - 8°C when stored undiluted. Do not freeze. Protect product from prolonged exposure to light. For product expiry date, contact [techsupport@stemcell.com](mailto:techsupport@stemcell.com).

**Directions for Use:** For flow cytometry, the suggested use of this antibody is 20 µL per  $1 \times 10^6$  cells in 100 µL volume. It is recommended that the antibody be titrated for optimal performance for each application.

## Data



Flow cytometry analysis of human peripheral blood mononuclear cells (PBMCs; gated on lymphocytes) labeled with Anti-Human CD24 Antibody, Clone 32D12, FITC (filled histogram) or Mouse IgG1, kappa Isotype Control Antibody, Clone MOPC-21, FITC (Catalog #60070FI; solid line histogram).

## Related Products

For a complete list of antibodies, including other conjugates, sizes, and clones, as well as related products available from STEMCELL Technologies, visit [www.stemcell.com/antibodies](http://www.stemcell.com/antibodies), or contact us at [techsupport@stemcell.com](mailto:techsupport@stemcell.com).

## References

Fogel M et al. (1999) CD24 is a marker for human breast carcinoma. *Cancer Lett* 143(1): 87–94. (FC) 4. Aigner S et al. (1997) CD24, a mucin-type glycoprotein, is a ligand for P-selectin on human tumor cells. *Blood* 89(9): 3385–95.

Goldstein AS et al. (2011) Purification and direct transformation of epithelial progenitor cells from primary human prostate. *Nat Protoc* 6(5): 656–67.

Kay R et al. (1991) CD24, a signal transducer modulating B cell activation responses, is a very short peptide with a glycosyl phosphatidylinositol membrane anchor. *J Immunol* 147(4): 1412–6.

Migita M et al. (1995) Selection of transduced CD34+ progenitors and enzymatic correction of cells from Gaucher patients, with bicistronic vectors. *Proc Natl Acad Sci U S A* 92(26): 12075–9.

Pawliuk R et al. (1994) Selection of retrovirally transduced hematopoietic cells using CD24 as a marker of gene transfer. *Blood* 84(9): 2868–77.

Pirruccello SJ & Lang MS. (1990) Differential expression of CD24-related epitopes in mycosis fungoides/Sézary syndrome: a potential marker for circulating Sézary cells. *Blood* 76(11): 2343–7.

Rasmussen AM et al. (1992) A new method for detachment of Dynabeads from positively selected B lymphocytes. *J Immunol Methods* 146(2): 195–202.

Sahlberg SH et al. (2014) Evaluation of cancer stem cell markers CD133, CD44, CD24: association with AKT isoforms and radiation resistance in colon cancer cells. *PLoS One* 9(4): e94621.

PRODUCTS ARE FOR RESEARCH USE ONLY AND NOT INTENDED FOR HUMAN OR ANIMAL DIAGNOSTIC OR THERAPEUTIC USES UNLESS OTHERWISE STATED.

Copyright © 2024 by STEMCELL Technologies Inc. All rights reserved including graphics and images. STEMCELL Technologies & Design, STEMCELL Shield Design and Scientists Helping Scientists are trademarks of STEMCELL Technologies Inc. All other trademarks are the property of their respective holders. While STEMCELL has made all reasonable efforts to ensure that the information provided by STEMCELL and its suppliers is correct, it makes no warranties or representations as to the accuracy or completeness of such information.