

Anti-Human TRA-1-81 Antibody, Clone TRA-1-81, APC

Mouse monoclonal IgM antibody against human, rat, rhesus TRA-1-81, APC-conjugated

Catalog #60065AZ

100 Tests

5 µL/test

Product Description

This monoclonal antibody reacts with a carbohydrate epitope on TRA-1-81, a high-molecular-mass (> 200 kDa) glycoprotein expressed on the surface of human embryonal carcinoma (EC), embryonic germ (EG), embryonic stem (ES), and induced pluripotent stem (iPS) cells, as well as rhesus monkey and rat ES cell lines. No immunoreactivity is observed with mouse EC, EG, ES, or iPS cells. The epitope of the TRA-1-81 antibody is associated with a keratan-sulfated transmembrane protein identified as podocalyxin and is resistant to treatment with neuraminidase.

Target Antigen:	TRA-1-81
Alternative Names:	Podocalyxin
Gene ID:	5420
Species Reactivity:	Human, Rat, Rhesus
Host Species:	Mouse
Clonality:	Monoclonal
Clone:	TRA-1-81
Isotype:	IgM, kappa
Immunogen:	Human embryonal carcinoma cell line 2102Ep cl.2A6
Conjugate:	APC (Allophycocyanin)

Applications

Verified Applications: FC

Reported Applications: FC

Special Applications: This antibody clone has been verified for labeling human ES and iPS cells grown in TeSR™-E8™ (Catalog #05940) and mTeSR™1 (Catalog #05850).

Abbreviations: CellSep: Cell separation; ChIP: Chromatin immunoprecipitation; FA: Functional assay; FACS: Fluorescence-activated cell sorting; FC: Flow cytometry; ICC: Immunocytochemistry; IF: Immunofluorescence microscopy; IHC: Immunohistochemistry; IHC-P: Immunohistochemistry (paraffin-embedded); IP: Immunoprecipitation; RIA: Radioimmunoassay; WB: Western blotting

Properties

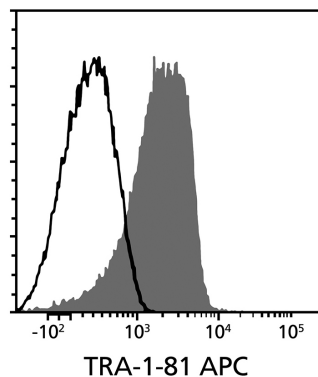
Product Formulation: Aqueous buffer containing 0.09% sodium azide, may contain carrier protein/stabilizer

Purification: The antibody was purified by column chromatography.

Stability and Storage: Product stable at 2 - 8°C when stored undiluted. Do not freeze. Protect product from prolonged exposure to light. For product expiry date, contact techsupport@stemcell.com.

Directions for Use: For flow cytometry, the suggested use of this antibody is 5 µL per 1×10^6 cells in 100 µL. It is recommended that the antibody be titrated for optimal performance for each application.

Data



Flow cytometry analysis of human ES cells labeled with Anti-Human TRA-1-81 Antibody, Clone TRA-1-81, APC (filled histogram) or a mouse IgM, kappa APC isotype control antibody (solid line histogram).

Related Products

For a complete list of antibodies, including other conjugates, sizes, and clones, as well as related products available from STEMCELL Technologies, visit www.stemcell.com/antibodies, or contact us at techsupport@stemcell.com.

References

- Andrews PW et al. (1984) Three monoclonal antibodies defining distinct differentiation antigens associated with different high molecular weight polypeptides on the surface of human embryonal carcinoma cells. *Hybridoma* 3(4): 347–61.
- Henderson JK et al. (2002) Preimplantation human embryos and embryonic stem cells show comparable expression of stage-specific embryonic antigens. *Stem Cells* 20(4): 329–37.
- Kuai XL et al. (2009) Differentiation of nonhuman primate embryonic stem cells along neural lineages. *Differentiation* 77(3): 229–38.
- Lowry WE et al. (2008) Generation of human induced pluripotent stem cells from dermal fibroblasts. *Proc Natl Acad Sci USA* 105(8): 2883–8.
- Miyoshi N et al. (2010) Defined factors induce reprogramming of gastrointestinal cancer cells. *Proc Natl Acad Sci USA* 107(1): 40–5.
- Natunen S et al. (2011) The binding specificity of the marker antibodies Tra-1-60 and Tra-1-81 reveals a novel pluripotency-associated type 1 lactosamine epitope. *Glycobiology* 21(9): 1125–30.
- Schopperle WM & DeWolf WC. (2007) The TRA-1-60 and TRA-1-81 human pluripotent stem cell markers are expressed on podocalyxin in embryonal carcinoma. *Stem Cells* 25(3): 723–30.
- Thomson JA et al. (1995) Isolation of a primate embryonic stem cell line. *Proc Natl Acad Sci USA* 92(17): 7844–8.
- Ueda S et al. (2008) Establishment of rat embryonic stem cells and making of chimera rats. *PLoS One* 3(7): e2800.

PRODUCTS ARE FOR RESEARCH USE ONLY AND NOT INTENDED FOR HUMAN OR ANIMAL DIAGNOSTIC OR THERAPEUTIC USES UNLESS OTHERWISE STATED.

Copyright © 2024 by STEMCELL Technologies Inc. All rights reserved including graphics and images. STEMCELL Technologies & Design, STEMCELL Shield Design, and Scientists Helping Scientists are trademarks of STEMCELL Technologies Canada Inc. TeSR, E8 and mTeSR are trademarks of WARF. All other trademarks are the property of their respective holders. While STEMCELL has made all reasonable efforts to ensure that the information provided by STEMCELL and its suppliers is correct, it makes no warranties or representations as to the accuracy or completeness of such information