

# EasySep™ Human Naïve CD4+ T Cell Isolation Kit

For processing 1 x 10<sup>9</sup> cells

Catalog #19555

Negative Selection

Document #1000000892 | Version 01



Scientists Helping Scientists™ | [WWW.STEMCELL.COM](http://WWW.STEMCELL.COM)

TOLL FREE PHONE 1 800 667 0322 • PHONE +1 604 877 0713

[INFO@STEMCELL.COM](mailto:INFO@STEMCELL.COM) • [TECHSUPPORT@STEMCELL.COM](mailto:TECHSUPPORT@STEMCELL.COM)

FOR GLOBAL CONTACT DETAILS VISIT OUR WEBSITE

## Description

Isolate untouched and highly purified naïve CD4+ T cells (CD3+CD4+CD45RA+CD45RO-) from fresh or previously frozen human peripheral blood mononuclear cells (PBMCs) by immunomagnetic negative selection.

- Fast, easy-to-use and column-free
- Up to 96% purity
- Isolated cells are untouched

This kit targets non-naïve CD4+ T cells for removal with antibodies recognizing CD8, CD14, CD16, CD19, CD20, CD25, CD36, CD56, CD61, CD66b, CD123, HLA-DR, TCR $\gamma/\delta$ , and glycoporphin A surface markers. Unwanted cells are labeled with antibodies and magnetic particles, and separated without columns using an EasySep™ magnet. Desired cells are simply poured off into a new tube. Isolated cells are immediately available for downstream applications such as flow cytometry, culture, or DNA/RNA extraction.

## Component Descriptions

COMPONENT NAME	COMPONENT #	QUANTITY	STORAGE	SHELF LIFE	FORMAT
EasySep™ Human Naïve CD4+ T Cell Isolation Cocktail	19555C	1 x 1 mL	Store at 2 - 8°C. Do not freeze.	Stable until expiry date (EXP) on label.	A combination of monoclonal antibodies in PBS.
EasySep™ Biotinylated Anti-CD45RO Antibody	19156C	1 x 1 mL	Store at 2 - 8°C. Do not freeze.	Stable until expiry date (EXP) on label.	A combination of monoclonal antibodies in PBS, < 0.1% BSA, and < 0.1% sodium azide.
EasySep™ Dextran RapidSpheres™ 50103 ‡	50103	1 x 1 mL	Store at 2 - 8°C. Do not freeze.	Stable until expiry date (EXP) on label.	A suspension of magnetic particles in water.

PBS - phosphate-buffered saline

‡ When using the Easy 50 EasySep™ Magnet, contact us at [techsupport@stemcell.com](mailto:techsupport@stemcell.com) to request an additional vial of EasySep™ Dextran RapidSpheres™ 50103.

Components may be shipped at room temperature (15 - 25°C) but should be stored as indicated above.

## Sample Preparation

For available fresh and frozen samples, see [www.stemcell.com/primarycells](http://www.stemcell.com/primarycells).

### PERIPHERAL BLOOD

Prepare a PBMC suspension from whole blood by centrifugation over a density gradient medium (e.g. Lymphoprep™, Catalog #07801). For more rapid PBMC preparation, use the SepMate™ RUO (Catalog #86450/86415) or SepMate™ IVD\* (Catalog #85450/85415) cell isolation tube.

If using previously frozen PBMCs, incubate the cells with DNase I Solution (Catalog #07900) at a concentration of 100 µg/mL at room temperature (15 - 25°C) for at least 15 minutes prior to labeling and separation. Filter aggregated suspensions through a 37 µm cell strainer (Catalog #27250) for optimal results.

After preparation, resuspend cells at 5 x 10<sup>7</sup> cells/mL in recommended medium.

\* SepMate™ IVD is only available in select regions where it is registered as an In Vitro Diagnostic (IVD) device for the isolation of mononuclear cells (MNCs) from whole blood or bone marrow by density gradient centrifugation. In all other regions SepMate™ is available for research use only (RUO).

### LEUKAPHERESIS

1. Add an equal volume of Ammonium Chloride Solution (Catalog #07800) to the Leukopak.

NOTE: If working with large volumes (> 150 mL), concentrate the Leukopak first by centrifuging at 500 x g for 10 minutes. Remove the supernatant and resuspend the cells in 1/10th of the original Leukopak volume with recommended medium (e.g. for 300 mL of cells, resuspend in 30 mL of recommended medium and add 30 mL of Ammonium Chloride Solution). For small volumes (≤ 150 mL), add Ammonium Chloride Solution directly to the Leukopak.

2. Incubate on ice for 15 minutes.

3. Centrifuge at 500 x g for 10 minutes at room temperature (15 - 25°C). Remove the supernatant.

4. Wash the cells by topping up the tube with recommended medium. Centrifuge the cells at 150 x g for 10 minutes at room temperature with the brake off. Carefully remove the supernatant.

5. Repeat step 4 one or more times until most of the platelets have been removed (indicated by a clear supernatant).

6. Resuspend the cells at 5 x 10<sup>7</sup> cells/mL in recommended medium.



## Recommended Medium

EasySep™ Buffer (Catalog #20144), RoboSep™ Buffer (Catalog #20104), or PBS containing 2% fetal bovine serum (FBS) with 1 mM EDTA. Medium should be free of Ca<sup>++</sup>, Mg<sup>++</sup>, and biotin.

## Directions for Use – Manual EasySep™ Protocols

See page 1 for Sample Preparation and Recommended Medium. Refer to Tables 1 and 2 for detailed instructions regarding the EasySep™ procedure for each magnet.




**Table 1. EasySep™ Human Naïve CD4+ T Cell Isolation Kit Protocol**

		EASYSEP™ MAGNETS	
STEP	INSTRUCTIONS	 EasySep™ (Catalog #18000)	 “The Big Easy”™ (Catalog #18001)
1	Prepare sample at the indicated cell concentration within the volume range.	5 x 10 <sup>7</sup> cells/mL 0.1 - 2 mL	5 x 10 <sup>7</sup> cells/mL 0.25 - 8.5 mL
	Add sample to required tube.	5 mL (12 x 75 mm) polystyrene round-bottom tube (e.g. Catalog #38007)	14 mL (17 x 95 mm) polystyrene round-bottom tube (e.g. Catalog #38008)
2	Add Biotinylated Anti-CD45RO Antibody to sample.	50 µL/mL of sample	50 µL/mL of sample
	Add Isolation Cocktail to sample.	50 µL/mL of sample	50 µL/mL of sample
	Mix and incubate.	RT for 5 minutes	RT for 5 minutes
3	Vortex RapidSpheres™. NOTE: Particles should appear evenly dispersed.	30 seconds	30 seconds
4	Add RapidSpheres™ to sample.	50 µL/mL of sample	50 µL/mL of sample
	Mix and incubate.	RT for 5 minutes	RT for 5 minutes
5	Add recommended medium to top up the sample to the indicated volume. Mix by gently pipetting up and down 2 - 3 times.	Top up to 2.5 mL	<ul style="list-style-type: none"> <li>• Top up to 5 mL for samples &lt; 4 mL</li> <li>• Top up to 10 mL for samples ≥ 4 mL</li> </ul>
	Place the tube (without lid) into the magnet and incubate.	RT for 5 minutes	RT for 5 minutes
6	Pick up the magnet, and in one continuous motion invert the magnet and tube,* pouring the enriched cell suspension into a new tube.	Use a new 5 mL tube	Use a new 14 mL tube
7	Remove the tube from the magnet and place the new tube (without lid) into the magnet and incubate for a second separation.	RT for 5 minutes	RT for 5 minutes
8	Pick up the magnet, and in one continuous motion invert the magnet and tube,* pouring the enriched cell suspension into a new tube.	Isolated cells are ready for use	Isolated cells are ready for use

RT - room temperature (15 - 25°C)

\* Leave the magnet and tube inverted for 2 - 3 seconds, then return upright. Do not shake or blot off any drops that may remain hanging from the mouth of the tube.

Table 2. EasySep™ Human Naïve CD4+ T Cell Isolation Kit Protocol

STEP	INSTRUCTIONS	EASYSEP™ MAGNETS		
		 EasyEights™ (Catalog #18103) 	Easy 50 ‡ (Catalog #18002) 	
		5 mL tube	14 mL tube	
1	Prepare sample at the indicated cell concentration within the volume range.	5 x 10 <sup>7</sup> cells/mL 0.25 - 2 mL	5 x 10 <sup>7</sup> cells/mL 2 - 8.5 mL	5 x 10 <sup>7</sup> cells/mL 5 - 40 mL
	Add sample to required tube.	5 mL (12 x 75 mm) polystyrene round-bottom tube (e.g. Catalog #38007)	14 mL (17 x 95 mm) polystyrene round-bottom tube (e.g. Catalog #38008)	50 mL (30 x 115 mm) conical tube (e.g. Catalog #38010)
2	Add Biotinylated Anti-CD45RO antibody to sample.	50 µL/mL of sample	50 µL/mL of sample	50 µL/mL of sample
	Add Isolation Cocktail to sample.	50 µL/mL of sample	50 µL/mL of sample	50 µL/mL of sample
	Mix and incubate.	RT for 5 minutes	RT for 5 minutes	RT for 5 minutes
3	Vortex RapidSpheres™. NOTE: Particles should appear evenly dispersed.	30 seconds	30 seconds	30 seconds
4	Add RapidSpheres™ to sample.	50 µL/mL of sample	50 µL/mL of sample	100 µL/mL of sample
	Mix and incubate.	RT for 5 minutes	RT for 5 minutes	RT for 5 minutes
5	Add recommended medium to top up sample to the indicated volume. Mix by gently pipetting up and down 2 - 3 times.	Top up to 2.5 mL	<ul style="list-style-type: none"> <li>Top up to 5 mL for samples &lt; 4 mL</li> <li>Top up to 10 mL for samples ≥ 4 mL</li> </ul>	<ul style="list-style-type: none"> <li>Top up to 25 mL for samples ≤ 10 mL</li> <li>Top up to 50 mL for samples &gt; 10 mL</li> </ul>
	Place the tube (without lid) into the magnet and incubate.	RT for 5 minutes	RT for 5 minutes	RT for 10 minutes
6	Carefully pipette** (do not pour) the enriched cell suspension into a new tube.	Use a new 5 mL tube	Use a new 14 mL tube	Use a new 50 mL tube
7	Remove the tube from the magnet and place the new tube (without lid) into the magnet and incubate for a second round of separation.	RT for 5 minutes	RT for 5 minutes	RT for 10 minutes
8	Carefully pipette** (do not pour) the enriched cell suspension into a new tube. Collect only the clear fraction.	Isolated cells are ready for use	Isolated cells are ready for use	Isolated cells are ready for use

RT - room temperature (15 - 25°)

‡ When using the Easy 50 EasySep™ Magnet, contact us at [techsupport@stemcell.com](mailto:techsupport@stemcell.com) to request an additional vial of EasySep™ Dextran RapidSpheres™ 50103.

\*\* Collect the entire supernatant, all at once, into a single pipette (e.g. for EasyEights™ 5 mL tube use a 2 mL serological pipette [Catalog #38002]; for EasyEights™ 14 mL tube use a 10 mL serological pipette [Catalog #38004]).

## Directions for Use – Fully Automated RoboSep™ Protocol

See page 1 for Sample Preparation and Recommended Medium. Refer to Table 3 for detailed instructions regarding the RoboSep™ procedure.

**Table 3. RoboSep™ Human Naïve CD4+ T Cell Isolation Kit Protocol**

STEP	INSTRUCTIONS	RoboSep™ (Catalog #21000)
1	Prepare sample at the indicated cell concentration within the volume range.	5 x 10 <sup>7</sup> cells/mL 1 - 8.5 mL NOTE: If starting with 2.5 - 5 x 10 <sup>7</sup> cells, resuspend cells in 1 mL.
	Add sample to required tube.	14 mL (17 x 95 mm) polystyrene round-bottom tube (e.g. Catalog #38008)
2	Select protocol.	Human Naïve CD4+ T Cell Isolation 19555
3	Vortex RapidSpheres™. NOTE: Particles should appear evenly dispersed.	30 seconds
4	Load the carousel.	Follow on-screen prompts
	Start the protocol.	Press the green "Run" button
5	Unload the carousel when the run is complete.	Isolated cells are ready for use

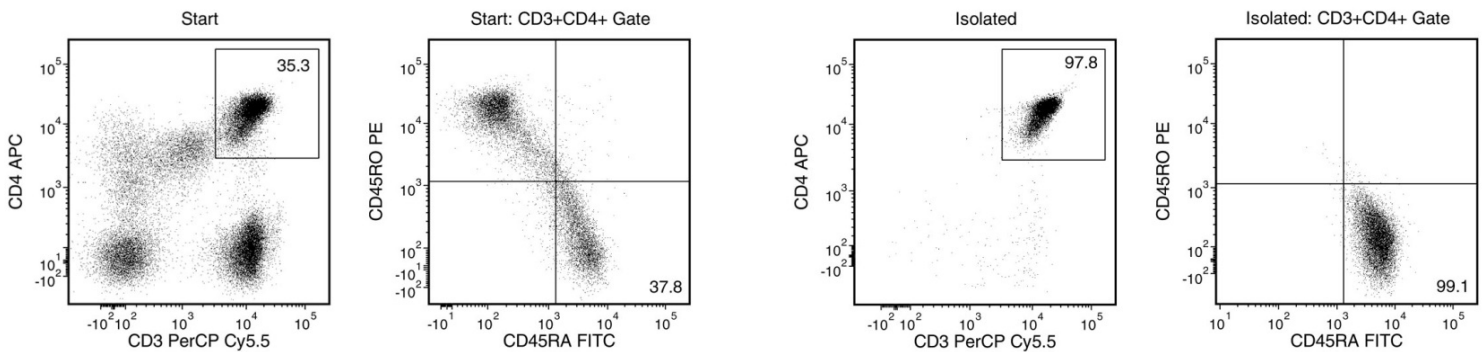
## Notes and Tips

### ASSESSING PURITY

For purity assessment of naïve CD4+ T cells (CD3+CD4+CD45RA+CD45RO-) by flow cytometry, use the following fluorochrome-conjugated antibody clones:

- Anti-Human CD3 Antibody, Clone UCHT1 (Catalog #60011), and
- Anti-Human CD4 Antibody, Clone OKT4 (Catalog #60016), and
- Anti-Human CD45RO Antibody, Clone UCHL1 (Catalog #60097), and
- Anti-Human CD45RA Antibody, Clone HI100 (Catalog #100-0316)

## Data



Starting with a single-cell suspension of PBMCs, the naïve CD4+ T cell content (CD3+CD4+CD45RA+CD45RO-) of the isolated fraction typically ranges from 91.3 - 96.9%. In the above example, the purities of the start and final isolated fractions are 11.1% and 93.2%, respectively.

PRODUCTS ARE FOR RESEARCH USE ONLY AND NOT INTENDED FOR HUMAN OR ANIMAL DIAGNOSTIC OR THERAPEUTIC USES UNLESS OTHERWISE STATED. FOR ADDITIONAL INFORMATION ON QUALITY AT STEMCELL, REFER TO WWW.STEMCELL.COM/COMPLIANCE.

Copyright © 2020 by STEMCELL Technologies Inc. All rights reserved including graphics and images. STEMCELL Technologies & Design, STEMCELL Shield Design, Scientists Helping Scientists, EasyEights, EasySep, RoboSep, RapidSpheres, and SepMate are trademarks of STEMCELL Technologies Canada Inc. Lymphoprep is a trademark of Alere Technologies. All other trademarks are the property of their respective holders. While STEMCELL has made all reasonable efforts to ensure that the information provided by STEMCELL and its suppliers is correct, it makes no warranties or representations as to the accuracy or completeness of such information.