

ImmunoCult™ Human CD3/CD28/CD2 T Cell Activator



Scientists Helping Scientists™ | WWW.STEMCELL.COM

TOLL FREE PHONE 1 800 667 0322 • PHONE +1 604 877 0713

INFO@STEMCELL.COM • TECHSUPPORT@STEMCELL.COM

FOR GLOBAL CONTACT DETAILS VISIT OUR WEBSITE

Catalog #10970 2 mL
#10990 5 x 2 mL

Product Description

ImmunoCult™ Human CD3/CD28/CD2 T Cell Activator is designed to activate and expand human T cells in the absence of magnetic beads, feeder cells, or antigen. ImmunoCult™ Human CD3/CD28/CD2 T Cell Activator consists of soluble antibody complexes that bind CD3, CD28, and CD2 cell surface ligands. Binding of the antibody complexes results in the cross-linking of CD3, CD28, and CD2 cell surface ligands, thereby providing the required primary and co-stimulatory signals for T cell activation. Activated T cells can be expanded in ImmunoCult™-XF T Cell Expansion Medium (Catalog #10981) or other media for culturing human T cells supplemented with cytokines.

- Robust activation and expansion of human T cells without the use of magnetic beads, feeder cells, or antigen
- Provides a gentle activation stimulus that maintains high viability of activated and expanded T cells
- Highly stable, filter-sterilized soluble reagent

Properties

Storage: Store at 2 - 8°C.

Shelf Life: Stable until expiry date (EXP) on label.

Contains:

- Anti-human CD3 monospecific antibody complex
- Anti-human CD28 monospecific antibody complex
- Anti-human CD2 monospecific antibody complex

Directions for Use

NOTE: This is a general protocol for using ImmunoCult™ Human CD3/CD28/CD2 T Cell Activator. Depending on the experimental objectives, optimization may be required (e.g. cell seeding density and cytokine concentration) for optimal cell growth.

1. Isolate human T cells from fresh or previously frozen peripheral blood mononuclear cells, or leukapheresis samples, using one of the following EasySep™ kits:

- EasySep™ Release Human CD3 Positive Selection Kit (Catalog #17751)
- EasySep™ Human T Cell Enrichment Kit (Catalog #19051)
- EasySep™ Human T Cell Isolation Kit (Catalog #17951)

NOTE: Isolated T cells can be cryopreserved using CryoStor® CS5 (Catalog #07933) or CryoStor® CS10 (Catalog #07930) and stored at -135°C.

2. On day 0:

a. Prepare fresh complete ImmunoCult™-XF T Cell Expansion Medium by adding cytokines (e.g. Human Recombinant IL-2; Catalog #78036) to ImmunoCult™-XF T Cell Expansion Medium. Mix thoroughly.

NOTE: Complete ImmunoCult™-XF T Cell Expansion Medium must be prepared fresh on each day of use.

b. Seed viable human T cells (prepared in step 1) in fresh complete ImmunoCult™-XF T Cell Expansion Medium (prepared in step 2a) at 1×10^6 cells/mL.

3. To activate T cells, add 25 μ L/mL of ImmunoCult™ Human CD3/CD28/CD2 T Cell Activator to the cell suspension. Incubate cells at 37°C and 5% CO₂ for up to 3 days.

4. To expand T cells (after 3 days of activation), perform a viable cell count and adjust the viable cell density every 2 - 3 days by adding fresh complete ImmunoCult™-XF T Cell Expansion Medium to the cell suspension.

NOTE: For recommended cell densities, refer to the Product Information Sheet for ImmunoCult™-XF T Cell Expansion Medium, available at www.stemcell.com or contact us to request a copy.

5. Incubate cells at 37°C and 5% CO₂ until the desired cell number is obtained or for up to 12 days.

6. For longer-term expansion (> 12 days) of human T cells:

- Harvest and resuspend the expanded T cells at 1×10^6 cells/mL in fresh complete ImmunoCult™-XF T Cell Expansion Medium.
- Restimulate by adding 25 μ L/mL of ImmunoCult™ Human CD3/CD28/CD2 T Cell Activator.

c. Incubate at 37°C and 5% CO₂. Every 2 - 3 days, adjust cell density by adding fresh complete ImmunoCult™-XF T Cell Expansion Medium.

NOTE: Ensure to add fresh complete medium every 2 - 3 days; do not wait more than 3 days between medium additions.

Related Products

For related products, including specialized culture and storage media, supplements, antibodies, cytokines, and small molecules, visit www.stemcell.com/TCellEngineering or contact us at techsupport@stemcell.com.

Data

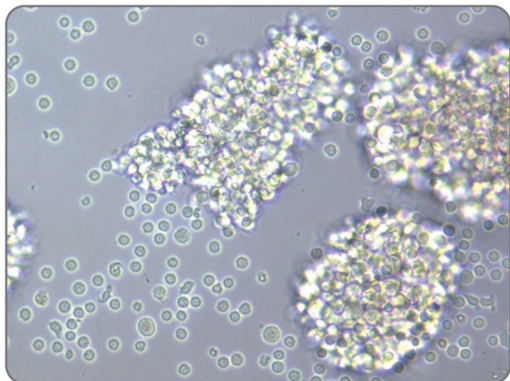


FIGURE 1. Morphology of Activated Human T Cells Stimulated with ImmunoCult™ Human CD3/CD28/CD2 T Cell Activator

Human T cells isolated using EasySep™ Human T Cell Isolation Kit, stimulated with ImmunoCult™ Human CD3/CD28/CD2 T Cell Activator, and cultured in complete ImmunoCult™-XF T Cell Expansion Medium.

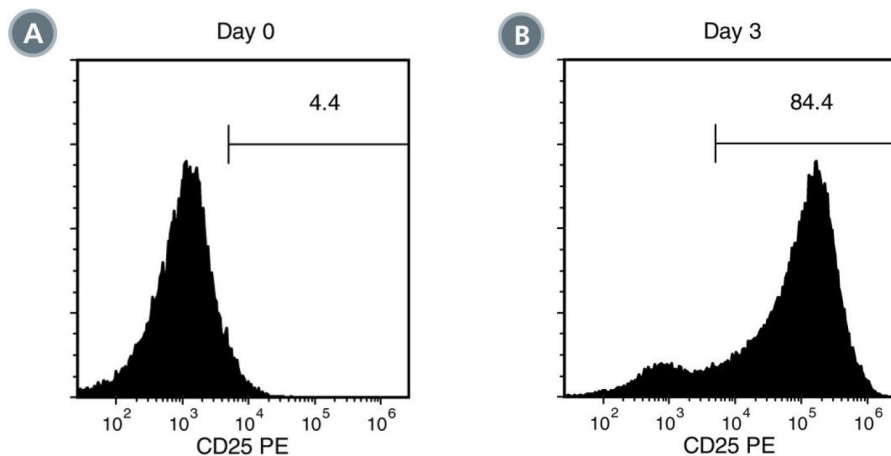


FIGURE 2. Activation of EasySep™-Isolated Human T Cells Stimulated with ImmunoCult™ Human CD3/CD28/CD2 T Cell Activator

EasySep™-isolated human T cells were stimulated with ImmunoCult™ Human CD3/CD28/CD2 T Cell Activator and cultured in complete ImmunoCult™-XF T Cell Expansion Medium. Activation of viable CD3+ T cells was assessed by CD25 expression using flow cytometry. On day 0, the frequency of CD25+ cells was (A) $5.6 \pm 2.4\%$ (mean \pm SD). Following 3 days of culture, the frequency of CD25+ cells was (B) $88.8 \pm 3.2\%$ (mean \pm SD) when stimulated with ImmunoCult™ Human CD3/CD28/CD2 T Cell Activator.

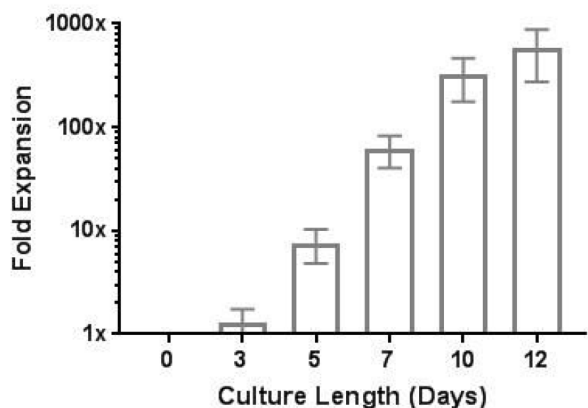


FIGURE 3. Robust Human T Cell Expansion with ImmunoCult™ Human CD3/CD28/CD2 T Cell Activator

EasySep™-isolated human T cells were expanded over 12 days with ImmunoCult™ Human CD3/CD28/CD2 T Cell Activator in ImmunoCult™-XF T Cell Expansion Medium supplemented with Human Recombinant IL-2. On day 0, 1×10^6 EasySep™-isolated human T cells were stimulated with 25 μ L of ImmunoCult™ Human CD3/CD28/CD2 T Cell Activator in ImmunoCult™-XF T Cell Expansion Medium supplemented with 10 ng/mL Human Recombinant IL-2. On days 3, 5, 7, and 10, viable cells were counted and fresh medium supplemented with IL-2 was added. No additional ImmunoCult™ Human CD3/CD28/CD2 T Cell Activator was added during the 12-day culture period (mean \pm SD in 6 experiments with 3 donors).

Notes and Tips

- Activated T cells can be used for gene editing, usually 2 - 3 days after activation; the optimal activation period may vary with different gene editing approaches.

ASSESSING PURITY

ImmunoCult™ Human CD3/CD28/CD2 T Cell Activator contains an anti-CD3 antibody clone that, to our knowledge, fully or partially blocks all anti-CD3 antibody clones used to assess CD3 expression by flow cytometry. For detection of activated T cells by flow cytometry, use alternative markers such as fluorochrome-conjugated Anti-Human CD4 Antibody, Clone OKT4 (Catalog #60016) and Anti-Human CD8a Antibody, Clone RPA-T8 (Catalog #60022).

PRODUCTS ARE FOR RESEARCH USE ONLY AND NOT INTENDED FOR HUMAN OR ANIMAL DIAGNOSTIC OR THERAPEUTIC USES UNLESS OTHERWISE STATED. FOR ADDITIONAL INFORMATION ON QUALITY AT STEMCELL, REFER TO WWW.STEMCELL.COM/COMPLIANCE.

Copyright © 2021 by STEMCELL Technologies Inc. All rights reserved including graphics and images. STEMCELL Technologies & Design, STEMCELL Shield Design, Scientists Helping Scientists, EasySep, and ImmunoCult are trademarks of STEMCELL Technologies Canada Inc. All other trademarks are the property of their respective holders. While STEMCELL has made all reasonable efforts to ensure that the information provided by STEMCELL and its suppliers is correct, it makes no warranties or representations as to the accuracy or completeness of such information.