

ISOLATE HUMAN IMMUNE CELLS

Use EasySep™ for highly purified cells in as little as 8 minutes



Cell isolation has never been this fast and easy. Isolate human immune cells in as little as 8 minutes with the next-generation EasySep™ human cell isolation kits featuring RapidSpheres™. Isolated cells are highly purified and ready for immediate downstream use.

Why Use EasySep™ For Human Cells?

FAST AND EASY. Isolate human immune cells in as little as 8 minutes from PBMCs or Leuko Paks.

COLUMN-FREE. With no columns or washes, the simple EasySep™ pour-off is gentle on your cells.

HIGH PURITY. Achieve purities of up to 99%.

SIMULTANEOUS SAMPLE ISOLATION. Process cells from multiple samples over a wide range of sizes at the same time.

Learn more at www.EasySep.com.

New and Improved EasySep™ Kits

CELL TYPE	CATALOG #
Negative Selection	
T Cells	17951
CD4 ⁺ T Cells	17952
CD8 ⁺ T Cells	17953
B Cells	17954
Naïve B Cells	17254
NK Cells	17955
Monocytes	19359
Positive Selection	
CD3 ⁺ Cells	17851
CD4 ⁺ Cells	17852
CD8 ⁺ Cells	17853
CD14 ⁺ Cells	17858
CD19 ⁺ Cells	17854
CD56 ⁺ Cells	17855

Which Cell Isolation Platform Should You Choose?



EasySep™
Manual Cell Separation



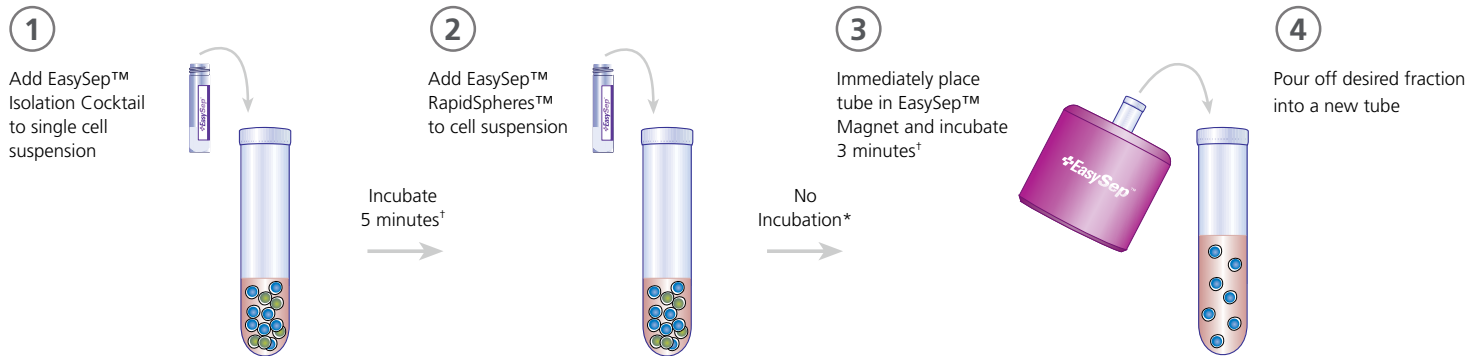
RoboSep-S™ & RoboSep™-16
Fully Automated Cell Separation



EasyEights™ & EasyPlate™
Multiplex Cell Separation

How Does EasySep™ Work?

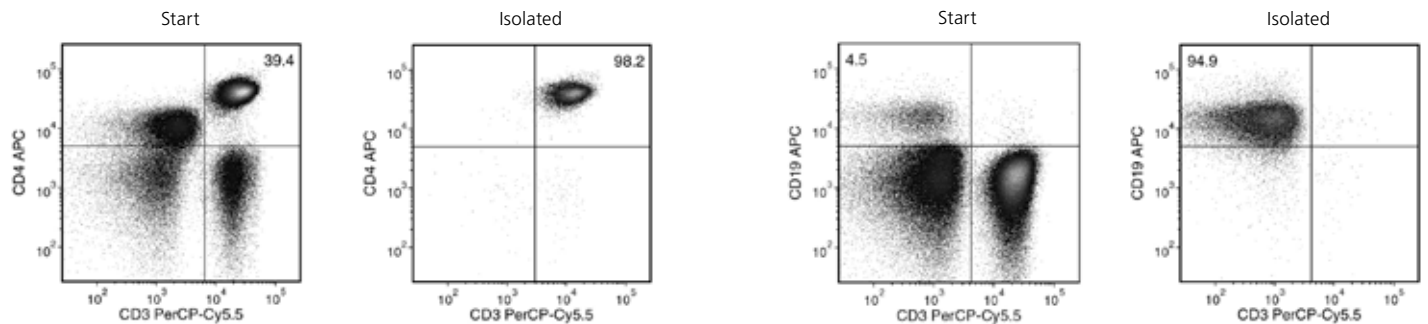
Typical EasySep™ Human Cell Isolation Protocol (Negative Selection)



†Times for each kit will vary depending on the exact isolation protocol and magnet used.

*No particle incubation step is required for new and improved negative selection protocols.

Highly Purified Cells



Typical EasySep™ Human CD4⁺ T Cell Isolation Profile

Starting with human peripheral blood mononuclear cells (PBMCs), the CD4⁺ T cell (CD3⁺CD4⁺) content of the isolated fraction is typically $94.8 \pm 2.3\%$ (mean \pm SD).

Typical EasySep™ Human B Cell Isolation Profile

Starting with human PBMCs, the B cell (CD3⁺CD19⁺) content of the isolated fraction is typically $95.1 \pm 1.4\%$ (mean \pm SD).

For a complete list of EasySep™ human cell isolation kits, please visit www.stemcell.com.

Copyright © 2018 by STEMCELL Technologies Inc. All rights reserved including graphics and images. STEMCELL Technologies & Design, STEMCELL Shield Design, Scientists Helping Scientists, EasySep, RoboSep, EasyEights, EasyPlate, and RapidSpheres are trademarks of STEMCELL Technologies Canada Inc. All other trademarks are the property of their respective holders. While STEMCELL has made all reasonable efforts to ensure that the information provided by STEMCELL and its suppliers is correct, it makes no warranties or representations as to the accuracy or completeness of such information.

STEMCELL TECHNOLOGIES INC.'S QUALITY MANAGEMENT SYSTEM IS CERTIFIED TO ISO 13485. PRODUCTS ARE FOR RESEARCH USE ONLY AND NOT INTENDED FOR HUMAN OR ANIMAL DIAGNOSTIC OR THERAPEUTIC USES UNLESS OTHERWISE STATED.