



# Human Immune Cell Isolation

**Fast & Easy**  
Cell Isolation



## 8 Minutes to Highly Purified Human Immune Cells

Cell isolation has never been this fast and easy. Isolate human immune cells **in as little as 8 minutes** with the next-generation EasySep™ human cell isolation kits featuring RapidSpheres™. Isolated cells are highly purified and ready for immediate downstream use.

### Why Use EasySep™ For Human Cells?

**FAST AND EASY.** Isolate human immune cells in as little as 8 minutes from PBMCs or Leuko Paks.

**COLUMN-FREE.** With no columns or washes, the simple EasySep™ pour-off is gentle on your cells.

**HIGH PURITY.** Achieve purities of up to 99%.

**SIMULTANEOUS SAMPLE ISOLATION.** Process cells from multiple samples over a wide range of sizes at the same time.

### New and Improved EasySep™ Kits

CELL TYPE	CATALOG #
Negative Selection	
T Cells	17951
CD4 <sup>+</sup> T Cells	17952
CD8 <sup>+</sup> T Cells	17953
B Cells	17954
Naïve B Cells	17254
NK Cells	17955
Monocytes	19359
Positive Selection	
CD3 <sup>+</sup> Cells	17851
CD4 <sup>+</sup> Cells	17852
CD8 <sup>+</sup> Cells	17853
CD14 <sup>+</sup> Cells	17858
CD19 <sup>+</sup> Cells	17854
CD56 <sup>+</sup> Cells	17855

### Which Cell Isolation Platform Should You Choose?



EasySep™  
Manual Cell Separation



RoboSep™-S & RoboSep™-16  
Fully Automated Cell Separation



EasyEights™ & EasyPlate™  
Multiplex Cell Separation

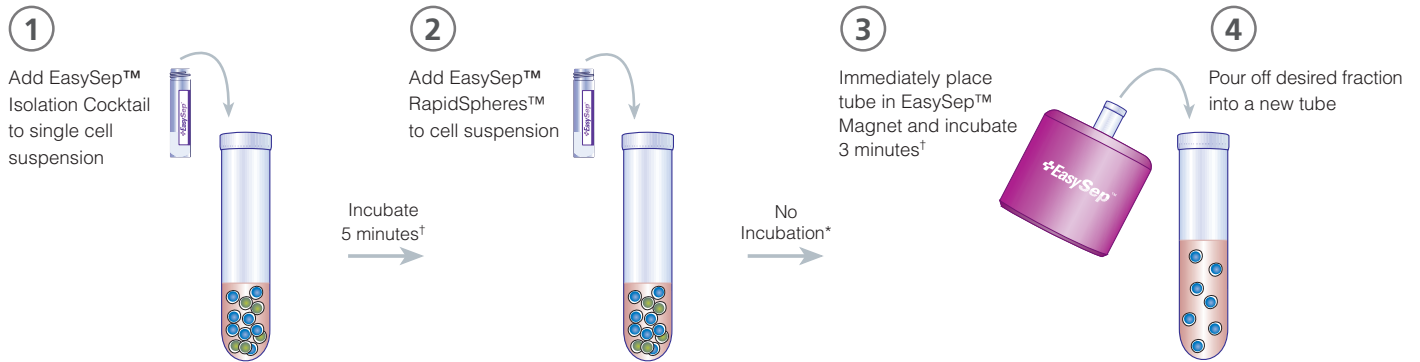


Scientists Helping Scientists™ | WWW.STEMCELL.COM | DOCUMENT #DX20276 | VERSION 1.2.1 | FEB 2016

TOLL FREE PHONE 1 800 667 0322 • PHONE +1 604 877 0713 • INFO@STEMCELL.COM • TECHSUPPORT@STEMCELL.COM  
FOR GLOBAL CONTACT DETAILS VISIT OUR WEBSITE

### How Does EasySep™ Work?

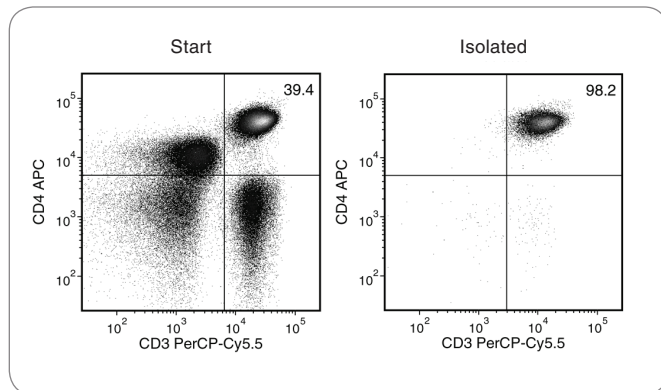
#### Typical EasySep™ Human Cell Isolation Protocol (Negative Selection)



†Times for each kit will vary depending on the exact isolation protocol and magnet used.

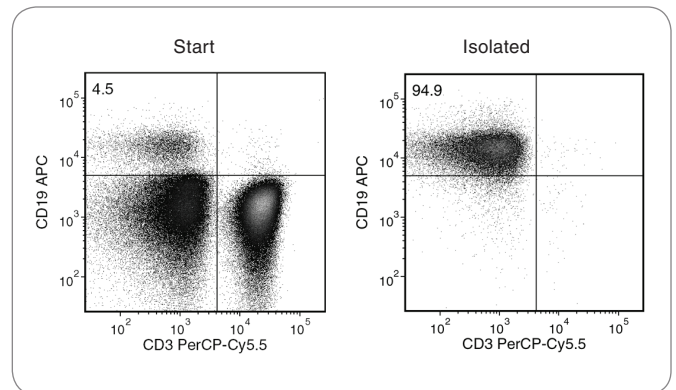
\*No particle incubation step is required for new and improved negative selection protocols.

### Highly Purified Cells



#### Typical EasySep™ Human CD4<sup>+</sup> T Cell Isolation Profile

Starting with human peripheral blood mononuclear cells (PBMCs), the CD4<sup>+</sup> T cell (CD3<sup>+</sup>CD4<sup>+</sup>) content of the isolated fraction is typically  $94.8 \pm 2.3\%$  (mean  $\pm$  SD).



#### Typical EasySep™ Human B Cell Isolation Profile

Starting with human PBMCs, the B cell (CD3<sup>+</sup>CD19<sup>+</sup>) content of the isolated fraction is typically  $95.1 \pm 1.4\%$  (mean  $\pm$  SD).

For a complete list of EasySep™ human cell isolation kits, please visit [www.stemcell.com](http://www.stemcell.com).