

# MOUSE CELL ISOLATION

Use EasySep™ for a Smarter Way to Isolate Cells

## Isolate Mouse Cells From Multiple Samples In As Little As 15 Minutes

Mouse cell isolation has never been this fast and easy. Isolate mouse cells from multiple samples in as little as 15 minutes with the next generation EasySep™ mouse cell isolation kits featuring RapidSpheres™ and our new multi-sample processing platform, the EasyEight™ EasySep™ Magnet.

Isolated cells are highly purified, untouched and ready for immediate downstream use.

Isolate untouched mouse cells with purities of up to 98%, including:

- B cells (Catalog #19854)
- Pan-B cells (Catalog #19844)
- T cells (Catalog #19851)
- Pan-Naive T cells (Catalog #19848)
- CD4<sup>+</sup> T cells (Catalog #19852)
- Naïve CD4<sup>+</sup> T cells (Catalog #19765)
- Memory CD4<sup>+</sup> T cells (Catalog #19767)
- CD8<sup>+</sup> T cells (Catalog #19853)
- Naïve CD8<sup>+</sup> T cells (Catalog #19858)
- NK cells (Catalog #19855)
- Monocytes (Catalog #19861)
- Hematopoietic progenitor cells (Catalog #19856)
- Any cell type using Streptavidin RapidSpheres™ (Catalog #19860)

### Why Use EasySep™ for Mouse Cells?

**FAST AND EASY.** Isolate mouse cells in as little as 15 minutes without the use of columns.

**UNTOUCHED CELLS.** Obtain unlabeled cells that are immediately ready for downstream functional studies.

**HIGH PURITY.** Achieve purities of up to 98%.

**SCALABLE.** Process up to 16 samples at the same time.

## Choose Your Cell Isolation Platform



EasySep™: Manual



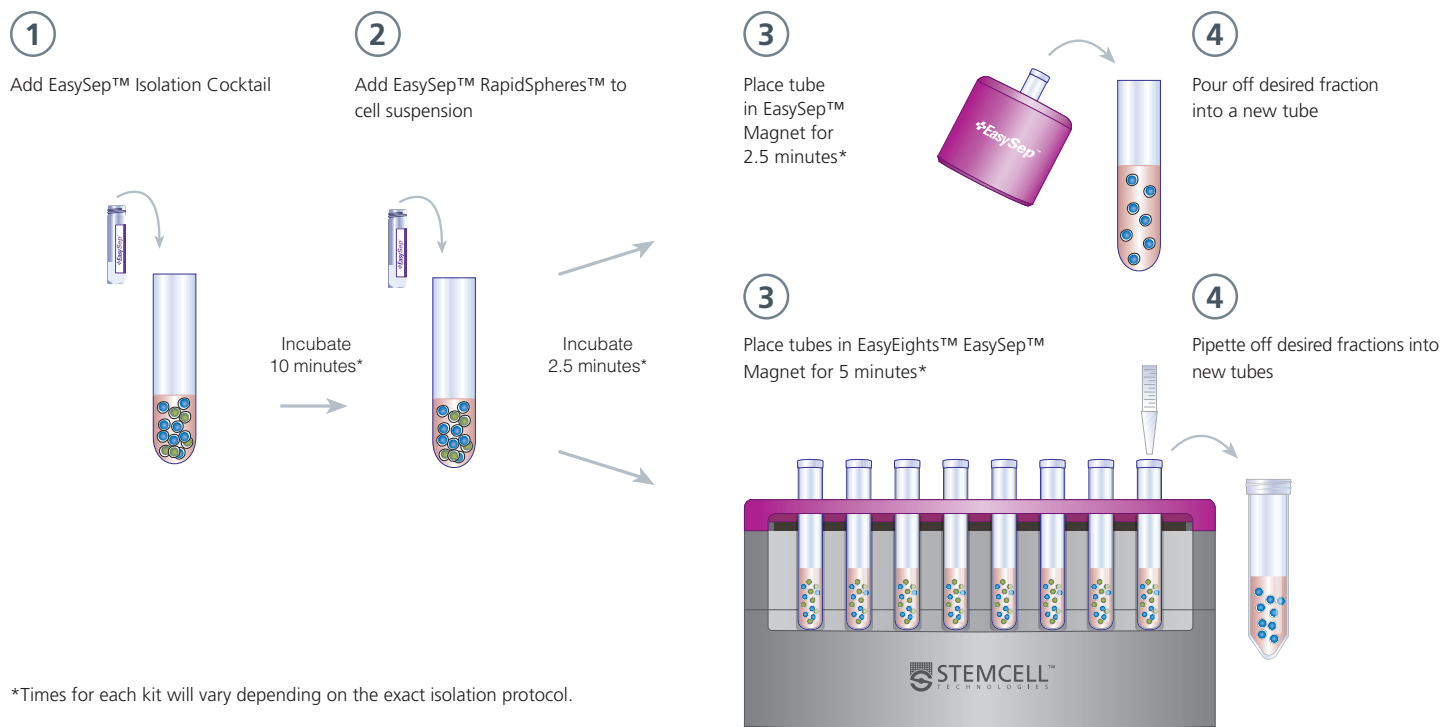
RoboSep™-S: Fully Automated



EasyEight™: Multiplex

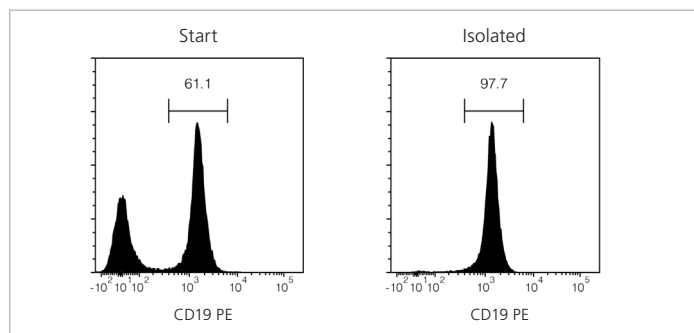
## How Does It Work?

### Typical Single or Multiple Sample EasySep™ Mouse Cell Isolation Protocol



### Why Use EasyEights™ for Mouse Cells?

- Simultaneously isolate up to 8 samples on each side, using 8 x 5 mL tubes on one side and 8 x 14 mL tubes on the other side
- Wide sample range from  $0.125 - 2.0 \times 10^8$  cells (per 5 mL tube) or  $0.25 - 8.0 \times 10^8$  cells (per 14 mL tube)
- Large magnet capacity of 64 mouse spleens or 64 mL of human cells at  $1 \times 10^8$  cells/mL
- Compatible with the 15-minute mouse EasySep™ RapidSpheres™ negative isolation kits



#### Typical EasySep™ Mouse B Cell Isolation Profile

Starting with mouse splenocytes, the B cell content of the isolated fraction typically ranges from 94% - 98%.

Find our complete listing of negative selection kits and our updated, faster EasySep™ mouse positive isolation products at [www.stemcell.com/15minkits](http://www.stemcell.com/15minkits).

Copyright © 2018 by STEMCELL Technologies Inc. All rights reserved including graphics and images. STEMCELL Technologies & Design, STEMCELL Shield Design, Scientists Helping Scientists, RapidSpheres, RoboSep, EasyPlate, EasySep and EasyEights are trademarks of STEMCELL Technologies Canada Inc. All other trademarks are the property of their respective holders. While STEMCELL has made all reasonable efforts to ensure that the information provided by STEMCELL and its suppliers is correct, it makes no warranties or representations as to the accuracy or completeness of such information.

STEMCELL TECHNOLOGIES INC.'S QUALITY MANAGEMENT SYSTEM IS CERTIFIED TO ISO 13485. PRODUCTS ARE FOR RESEARCH USE ONLY AND NOT INTENDED FOR HUMAN OR ANIMAL DIAGNOSTIC OR THERAPEUTIC USES UNLESS OTHERWISE STATED.