

ISOLATE CELLS DIRECTLY FROM WHOLE BLOOD

With EasySep™ Direct



Isolate Cells Directly from Whole Blood In As Little As 20 Minutes

Isolate highly purified cells straight from whole blood with EasySep™ Direct, a product that immunomagnetically depletes red blood cells and unwanted cells in a single step without density gradient centrifugation, RBC lysis or other pre-processing steps that can alter cellular function or increase cell isolation time. Isolated cells are untouched and highly purified (Table 1), making them ideal for downstream applications such as gene expression analysis, functional assays or flow cytometry.

Individual samples of 0.5–30 mL can be processed in as little as 20 minutes. To isolate cells from up to 16 samples simultaneously, combine EasySep™ Direct with the new EasyEights™ EasySep™ Magnet (Catalog #18103).

Typical Purities for Specific Cell Types Isolated Using EasySep™ Direct Kits

CELL TYPE	TYPICAL PURITY	CATALOG #
T Cells	95.3 ± 1.4%	19661
CD4 ⁺ T Cells	93.6 ± 2.5%	19662
CD8 ⁺ T Cells	82.4 ± 4.9%	19663
B Cells	95.3 ± 2.7%	19674
Naïve B Cells	91.8 ± 3.6%	19264
B-CLL Cells	87.0 ± 7.6%*	19664
NK Cells	90.4 ± 4.0%	19665
Total Lymphocytes	96.7 ± 1.5%	19655
Monocytes	82.2 ± 8.4%	19669
Granulocytes	98.4 ± 1.5%	19659
Neutrophils	97.3 ± 1.4%	19666
Basophils	97.3 ± 1.1%	19667
Eosinophils	95.8 ± 2.7%	19656
Circulating Tumor Cells (CTC's)	2.9 - 3.2 Log Depletion	19657

*Data from normal, healthy donors. B cell purity expected to be higher when working with B-CLL samples.

Why Use EasySep™ Direct?

- 99.9% RBC depletion without the need for lysis or centrifugation
- Fast, easy-to-use and column-free
- Target cells are highly purified and immediately available for downstream applications

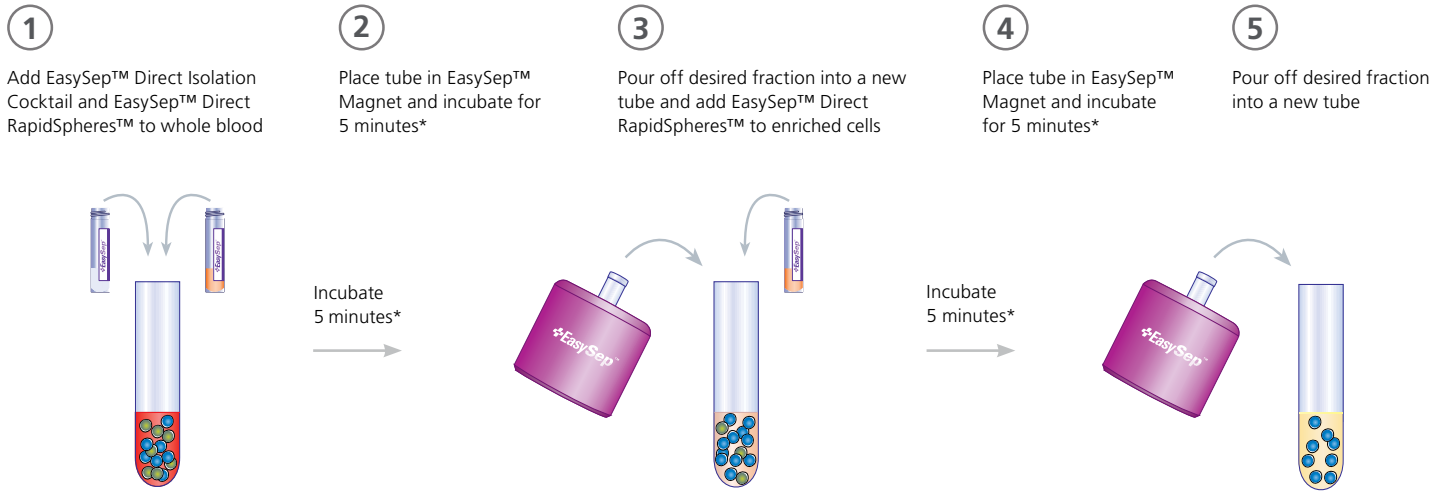
For more information on EasySep™ Direct, visit www.EasySepDirect.com.



VIDEO

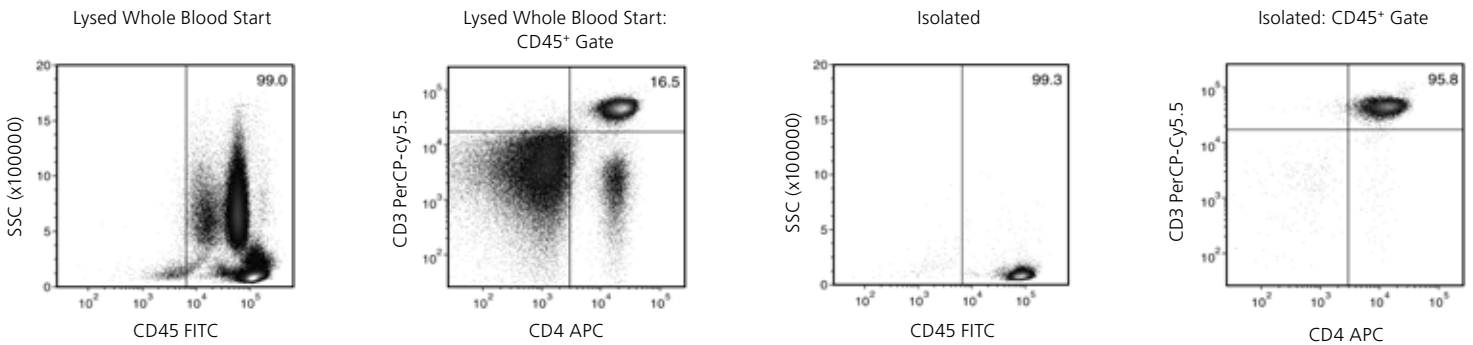
Introduction to EasySep™ Direct
www.stemcell.com/EasySepDirect

How Does It Work?



*Times are typical for EasySep™ Direct kits. Times for each kit will vary depending on the exact isolation protocol.

20 Minutes



Typical EasySep™ Direct CD4⁺ T Cell Isolation Profile

Starting with human whole blood from normal healthy donors, the typical CD4⁺ T cell (CD3⁺CD4⁺) content of the isolated fraction is 93.6 ± 2.5% (gated on CD45) or 93.1 ± 2.5% (not gated on CD45). In the above example, the CD4⁺ T cell (CD3⁺CD4⁺) content of the lysed whole blood start sample and non-lysed final isolated fraction is 16.5% and 95.8% (gated on CD45), respectively, or 16.3% and 95.1% (not gated on CD45), respectively. The starting frequency of CD4⁺ T cells in the non-lysed whole blood start sample is 0.016% (data not shown).

Copyright © 2018 by STEMCELL Technologies Inc. All rights reserved including graphics and images. STEMCELL Technologies & Design, STEMCELL Shield Design, Scientists Helping Scientists, RapidSpheres, EasyEights, and EasySep are trademarks of STEMCELL Technologies Canada Inc. All other trademarks are the property of their respective holders. While STEMCELL has made all reasonable efforts to ensure that the information provided by STEMCELL and its suppliers is correct, it makes no warranties or representations as to the accuracy or completeness of such information.

STEMCELL TECHNOLOGIES INC.'S QUALITY MANAGEMENT SYSTEM IS CERTIFIED TO ISO 13485. PRODUCTS ARE FOR RESEARCH USE ONLY AND NOT INTENDED FOR HUMAN OR ANIMAL DIAGNOSTIC OR THERAPEUTIC USES UNLESS OTHERWISE STATED.