



High-Quality and Reliable HLA Antibodies

We Take the Guesswork Out of Finding the Right Antibody

Cell isolation can be an important step in flow cytometry crossmatch and chimerism analysis. Screening antibodies shouldn't be. Don't waste valuable time in finding the right antibody for your cell analysis. Ensure consistent downstream cell analysis, including purity assessments, by using high-quality primary and secondary antibodies. These antibodies are verified to work with our cell isolation reagents in specific applications.

Detailed information on conjugation, size, pricing, verified and reported applications can be found at www.stemcell.com/antibodies.

EasySep™ Kits for Isolating Cells for Flow Cytometry Crossmatch Analysis and Recommended Antibodies for Purity Assessment

CELL TYPE	MARKER	EASYSEP™ REAGENT KIT			RECOMMENDED STAINING ANTIBODIES	
		Tissue	Type of Selection	Catalog#	Antigen, Clone	Catalog#
Total Lymphocytes	CD3/ CD19	WB ^{1,2}	Negative	19961HLA	Anti-Human CD3, UCHT1 and Anti-Human CD19, HIB19	60011 60005
T cells	CD2	WB PBMC, BM, SPLEEN, LN ³	Positive Positive	18687HLA 18657HLA	Anti-Human CD3, UCHT1 and Anti-Human CD56, HCD56	60011 60021
	CD3	WB PBMC, BM, SPLEEN, LN	Positive Positive	18081HLA 18051HLA	Anti-Human CD5, UCHT2 and Anti-Human CD20, 2H7 or Anti-Human CD2, RPA-2.10	60082 60008 60007
		WB PBMC, BM, SPLEEN, LN	Negative Negative	19951HLA 19051HLA	Anti-Human CD3, UCHT1	60011
B cells	CD19	WB PBMC, BM, SPLEEN, LN	Negative Negative	19954HLA 19054HLA	Anti-Human CD19, HIB19	60005

1. Anti-Human CD45, HI30 is also recommended for all whole blood purity assessments.
2. WB = Whole Blood; Kit also works on other red blood cell-containing samples (ie. buffy coat, cord blood, bone marrow).
3. PBMC = Peripheral Blood Mononuclear Cell; BM = Bone Marrow; LN = Lymph Node.

Example of antibody clones that have been verified for purity assessment of cells isolated with their respective EasySep™ kits for flow cytometry crossmatch analysis

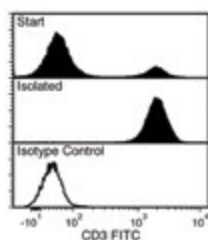


Figure 1. Flow cytometry analysis of human whole blood nucleated cells processed with the EasySep™ HLA Whole Blood T Cell Enrichment Kit (Catalog# 19951HLA) and labeled with Anti-Human CD3 Antibody, Clone UCHT1, FITC (Catalog# 60011FI). Histograms show labeling of HetaSep™-treated whole blood cells (Start) and isolated cells (Isolated). Labeling of start cells with a mouse IgG1, kappa FITC isotype control antibody is shown (open histogram).

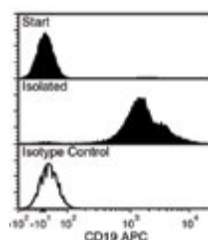


Figure 2. Flow cytometry analysis of human whole blood nucleated cells processed with the EasySep™ HLA B Cell Enrichment: Complete Processing Kit for Whole Blood (Catalog# 19954HLA) and labeled with Anti-Human CD19 Antibody, Clone HIB19, APC (Catalog# 60005AZ). Histograms show labeling of HetaSep™-treated whole blood cells (Start) and isolated cells (Isolated). Labeling of start cells with a mouse IgG1, kappa APC isotype control antibody is shown (open histogram).



Scientists Helping Scientists™

WWW.STEMCELL.COM

DOCUMENT #28087

VERSION 1.1.0

JULY 2015

TOLL FREE PHONE 1 800 667 0322 • PHONE +1 604 877 0713 • INFO@STEMCELL.COM • TECHSUPPORT@STEMCELL.COM
FOR GLOBAL CONTACT DETAILS VISIT OUR WEBSITE

FOR RESEARCH USE ONLY. NOT INTENDED FOR HUMAN OR ANIMAL DIAGNOSTIC OR THERAPEUTIC USES.
STEMCELL TECHNOLOGIES INC.'S QUALITY MANAGEMENT SYSTEM IS CERTIFIED TO ISO 13485 MEDICAL DEVICE STANDARDS.

EasySep™ Kits for Isolating Cells for Chimerism Analysis and Recommended Antibodies for Purity Assessment

CELL TYPE	MARKER	EASYSEP™ REAGENT KIT			RECOMMENDED STAINING ANTIBODIES	
		Tissue	Type of Selection	Catalog#	Antigen, Clone	Catalog#
T cells	CD3	WB ^{1,2} PBMC, BM, SPLEEN, LN ³	Positive Positive	18081HLA 18051HLA	Anti-Human CD5, UCHT2 and Anti-Human CD2, RPA-2.10 or Anti-Human CD20, 2H7	60082 60007 60008
B cells	CD19	WB PBMC, BM, SPLEEN, LN	Positive Positive	18084 18054	Anti-Human CD20, 2H7 or Anti-Human CD22, HIB22	60008 60083
	CD19/ CD20	WB PBMC, BM, SPLEEN, LN	Positive Positive	18184HLA 18454HLA	Anti-Human CD22, HIB22 or Anti-Human CD45, HI30 and Anti-Human CD43, CD43-10G7	60083 60018 60085
Myeloid Cells	CD15	WB	Positive	18681HLA	Anti-Human SSEA-1 (CD15), MC-480	60060
	CD33	WB PBMC, BM, SPLEEN, LN	Positive Positive	18287HLA 18257	Anti-Human CD14, M5E2 and Anti-Human CD66b, G10F5	60004 60086
	CD33/ CD66b	WB	Positive Positive	18683HLA	Anti-Human CD14, M5E2 and Anti-Human CD66b, G10F5	60004 60086
Granulocytes	CD66b	WB	Positive	18682	Anti-Human CD66b, G10F5	60086
Monocytes	CD14	WB PBMC, BM, SPLEEN, LN	Positive Positive	18088 18058	Anti-Human CD14, M5E2 or Anti-Human CD36, FA6-152	60004 60084
NK Cells	CD56	WB PBMC, BM, SPLEEN, LN	Positive Positive	18085HLA 18055	Anti-Human CD56 (NCAM), HCD56	60021
Hematopoietic Progenitor Cells	CD34	WB PBMC, BM, SPLEEN, LN	Positive Positive	18086 18056RF	Anti-Human CD34, 581	60013

1. Anti-Human CD45, HI30 (Catalog# 60018) is also recommended for all whole blood purity assessments.
2. WB = Whole Blood; Whole blood kits also work on other red blood cell-containing samples (ie. buffy coat, cord blood, bone marrow).
3. PBMC = Peripheral Blood Mononuclear Cell; BM = Bone Marrow; LN = Lymph Node.

Example of antibody clones that have been verified for purity assessments of cells isolated with their respective EasySep™ kits for chimerism analysis

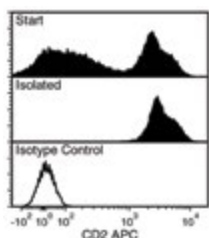


Figure 3. Flow cytometry analysis of human peripheral blood mononuclear cells (PBMCs) processed with the EasySep™ HLA CD3 Positive Selection Kit (Catalog# 18051HLA) and labeled with Anti-Human CD2 Antibody, Clone RPA-2, APC (Catalog# 60007AZ). Histograms show labeling of PBMCs (Start) and isolated cells (Isolated). Labeling of start cells with a mouse IgG1, kappa APC isotype control antibody is shown (open histogram).

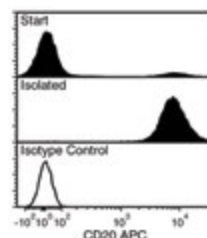


Figure 4. Flow cytometry analysis of human PBMCs processed with the EasySep™ Human CD19 Positive Selection Kit (Catalog# 18054) and labeled with Anti-Human CD20 Antibody, Clone 2H7, FITC (Catalog# 60008FI). Histograms show labeling of PBMCs (Start) and isolated cells (Isolated). Labeling of start cells with a mouse IgG2b, kappa FITC isotype control antibody is shown (open histogram).