

Human B Cell Isolation Product Selection

Explore the infographic below to find the correct human B cell isolation product for your application.

1. Your Starting Sample

2. Cell Separation Platform

3. Product Line

4. Selection Method

5. Cell Isolation Kits

Catalog #s shown in ()

Learn more at
www.stemcell.com/bcellresearch

Legend

Isolated Cell Type(s):
1: Naive B cells (CD19⁺CD20⁺CD27⁻)
2: Total Memory B cells (CD19⁺CD20⁺CD27⁺)
3: Plasma Cells (CD19^{low}/CD20^{low}/CD138⁺)
4: B-CLL (CD19⁺CD5⁺) incl. CD43⁺, CD36⁺ and/or CD123⁺ B Cells

*Cat #15129: An antibody against CD56 is not included in the cocktail. This kit is recommended to be used only with samples containing malignant plasma cells.

**PBMC = Peripheral Blood Mononuclear Cell

ⁱKits with **HLA designation** have been specifically developed to facilitate cell isolation for labs performing transplant diagnostics.

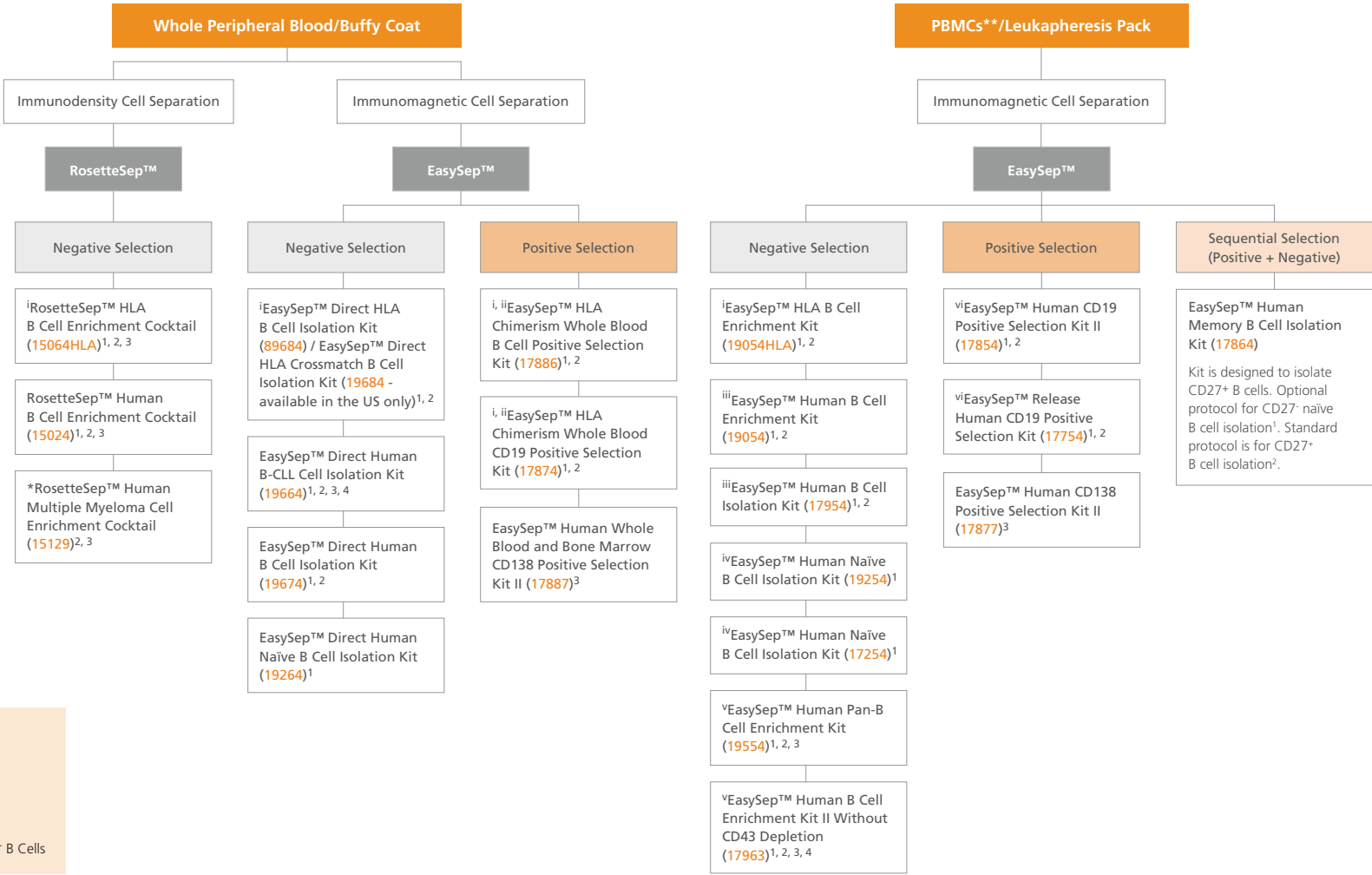
ⁱⁱ**Cat #17886 vs. 17874:** 17886 targets B cells for positive selection with antibodies recognizing the CD19 and CD20 surface markers, whereas 17874 targets CD19⁺ cells for positive selection with an antibody recognizing the CD19 surface marker. The CD19 antigen is present on mature B cells and B cell progenitors, but is lost upon maturation to plasma cells. The antigen CD20 is expressed at all stages of B cell development except on pro-B cells or plasma cells.

Copyright © 2023 by STEMCELL Technologies Inc. All rights reserved including graphics and images. STEMCELL Technologies & Design, STEMCELL Shield Design, Scientists Helping Scientists, RapidSpheres, RosetteSep, and EasySep are trademarks of STEMCELL Technologies Canada Inc. All other trademarks are the property of their respective holders.

PRODUCTS ARE FOR RESEARCH USE ONLY AND NOT INTENDED FOR HUMAN OR ANIMAL DIAGNOSTIC OR THERAPEUTIC USES UNLESS OTHERWISE STATED. FOR ADDITIONAL INFORMATION ON QUALITY AT STEMCELL, REFER TO WWW.STEMCELL.COM/COMPLIANCE.



TOLL FREE PHONE 1 800 667 0322 • PHONE +1 604 877 0713 • INFO@STEMCELL.COM • TECHSUPPORT@STEMCELL.COM
FOR GLOBAL CONTACT DETAILS VISIT WWW.STEMCELL.COM DOCUMENT #27233 VERSION 1.0.0 OCT 2023



ⁱⁱⁱ**Cat #19054 vs. 17954:** 17954 is a faster version of the 19054 kit. 17954 uses Dextran RapidSpheres™ (Cat #50103), which are different from the EasySep™ D Magnetic Particles (Cat #19250) used in 19054.

^{iv}**Cat #19254 vs. 17254:** 17254 is a faster version of the 19254 kit. 17254 uses Dextran RapidSpheres™ (Cat #50103), which are different from the EasySep™ D Magnetic Particles (Cat #19250) used in 19254.

^v**Cat #19554 vs. 17963:** To enrich for B cells from peripheral blood or other tissues of patients with B cell leukemia/lymphoma, or other disease states in which B cells may express CD43, CD36, and/or CD123, we recommend using 17963. The use of 19554 might lead to loss of leukemia/lymphoma B cells in certain donors.

^{vi}**Cat #17854 vs. 17754:** 17754 is the particle-release version of 17854. When using the 17754 kit, bound magnetic particles are removed from the EasySep™-isolated CD19⁺ cells.